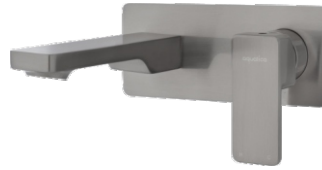
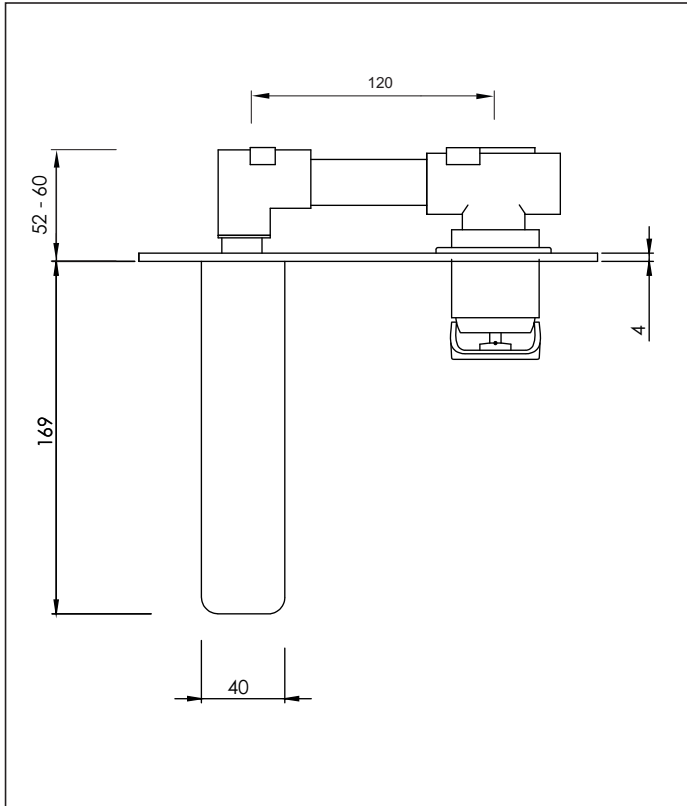


Mia2

2 Hole Wall Mounted Basin Mixer



Code: MI2 BASMWM | MI2 BASMWM BLK | MI2 BASMWM GM | MI2 BASMWM BN
Finish: Chrome | Black | Gunmetal | Brushed Nickel

Spout: Fixed, Side profile thickness = 14mm and 28mm

Reach of Spout: 154mm

Length: 169mm

Faceplate Dimensions: 200mm (length) x 80mm (width) x 4mm (thickness)

Backset: Minimum: 52mm
Maximum: 60mm

Water Inlets: 1/2" BSP female. Right hand side = cold. Below Mixer = Hot

Water Outlet: M24 Cache Aerator

Installation Hole Size: 55mm (H) x 170mm (W)

Cartridge: Mondo 35K Flat base

Flow Control: 7 l/min PCA fitted for regulated flow with mains pressure system

Max Hot @ 35kPa = 8.0 l/min

Suitable for mains pressure only

Recommended Operational Pressure Range: 150 - 600 kPa
Maximum Operating Temp: 80°C Never to Exceed: 1000 kPa



aquatica



KIWI OWNED COMPANY

NZ • DESIGNED
• ASSEMBLED
• TESTED

Aquatica NZ Limited

9 Saunders Place,
Avondale, Auckland.
Tel: 09-828 2068,
Fax: 09-828 2069
Email: info@aquatica.co.nz
or visit our website:
www.aquatica.co.nz

© copyright Aquatica 2019